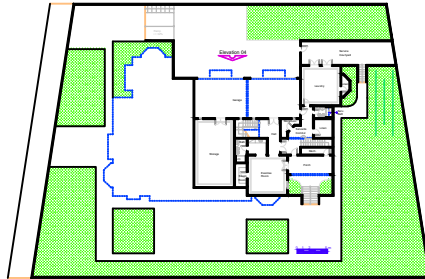
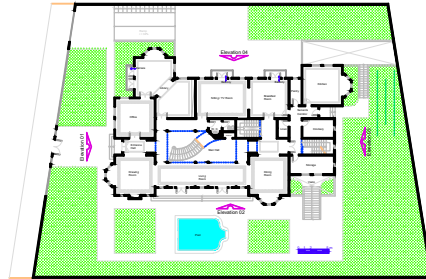


Roof Plan



Lower Floor Plan  
A = 263,73 m<sup>2</sup>



First Floor Plan  
A = 423,16 m<sup>2</sup>



Second Floor Plan  
A = 394,12 m<sup>2</sup>

Total Area = 1081,00 m<sup>2</sup>



Elevation 01



Elevation 02



Elevation 03



Elevation 04